



RH1

Recess Power and Cable Management Track

Installation Guide

CAUTION



Keep away from fire.



Keep away from water.



Not for outdoor use.



To be installed by a qualified electrician/installer.



PLEASE READ BEFORE INSTALLING

INSTALLING PARTY

All Power Tracks must be installed by a qualified electrician.

USE OF EARTH LEAKAGE CIRCUIT BREAKER (ELCB)

It is a mandatory requirement that all installations of electrical power source must be connected to an ELCB to provide protection against overload, short circuits and earth leakages faults. Failure to comply can be hazardous.

INSTALLATION LOCATION

All Power Tracks must be installed at location that complies with safety rules and regulations of respective country.

INSTALLATION SURFACE

All Power Tracks must be installed on flat wooden surface. [Minimum Depth for wooden surface = 15mm]

RECOMMENDED CUTOUT DIMENSIONS

Please refer to 'Recommended Cutout Dimension' for the recommended dimension of the recess channel.

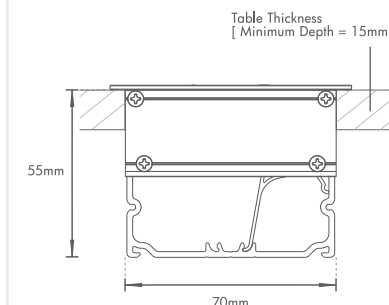
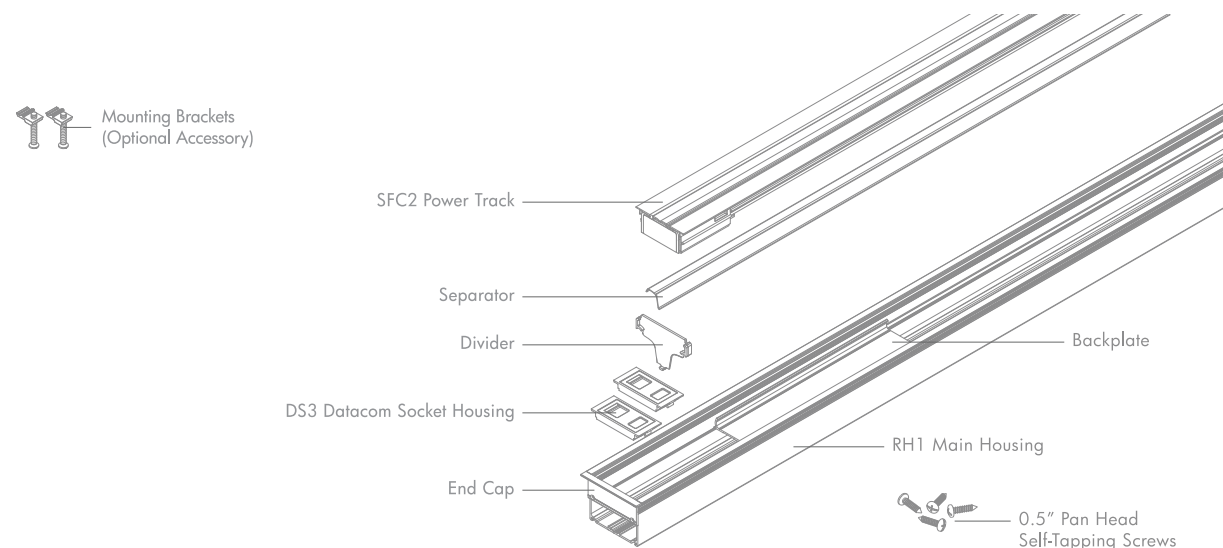


FIG. 1

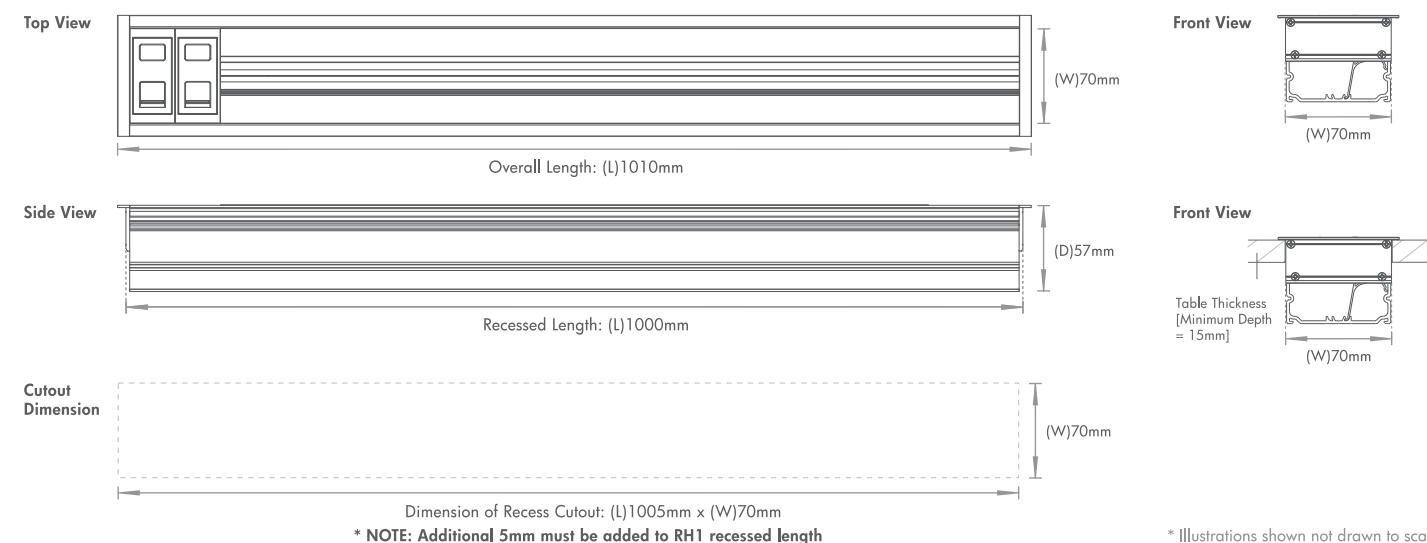
Technical Specification

| | |
|--|---|
| Rated Voltage | : 250V a.c. Single-phase |
| Rated Current | : 40Amp maximum |
| Frequency | : 50Hz / 60Hz |
| Conditional Short Circuit Rating | : (MCB: In:40A Ue:400V), Type B (BS EN 60898-1) Prospective current: 6KA (BS EN 60439-2) |
| Rated Impulse Withstand Voltage | : 4000V a.c. |
| Terminal Connecting Capacity (Live, Neutral and Earth) | : 4mm ² to 10mm ² |
| Ambient Operating Temperature | : -5°C to +40°C (not to exceed an average of more than 35°C in any 24 hours period) |
| Maximum Installation Altitude | : 2000 metres |
| Degree of Protection | : IP4X |
| Degree of Pollution | : 2 (Non-conductive pollution with temporary conductivity caused by condensation) |
| Track and Housing Material | : Aluminium |
| Insulation Material | : Polycarbonate |

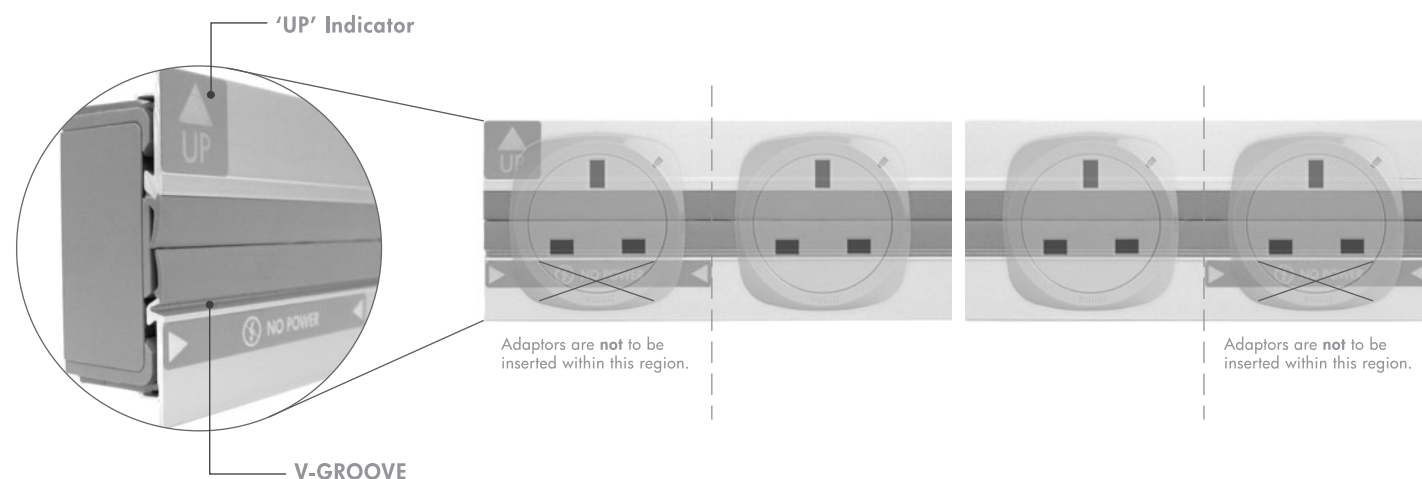
Product Overview



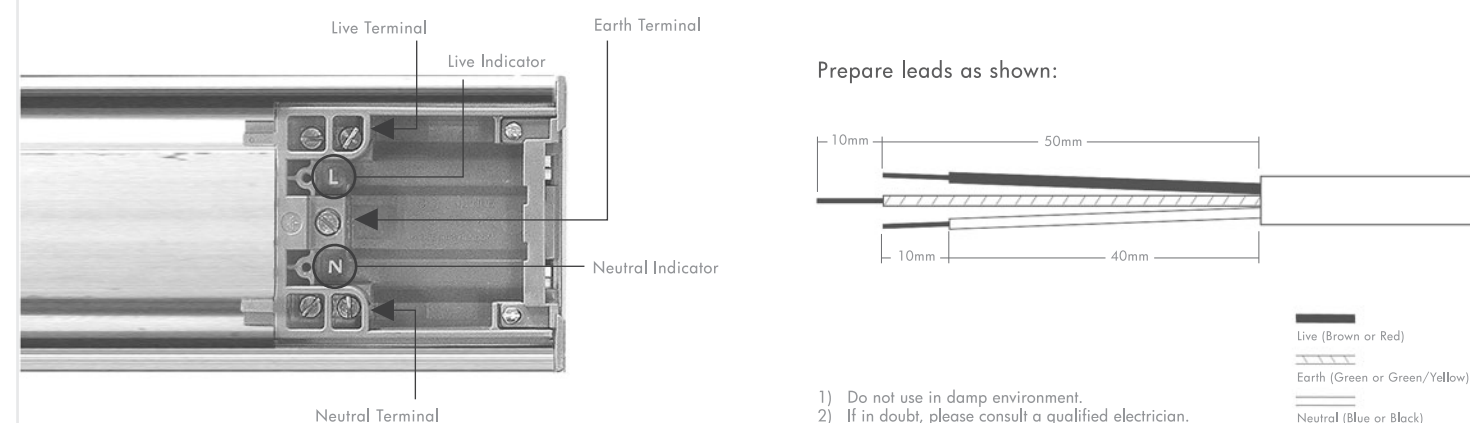
Recommended Cutout Dimension (Based on 1000mm recessed length)



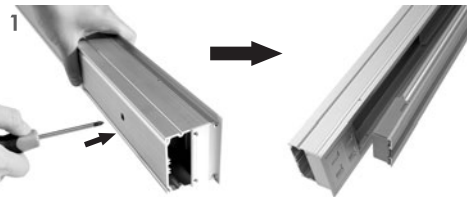
Product Orientation



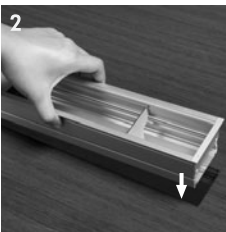
Wiring Instructions



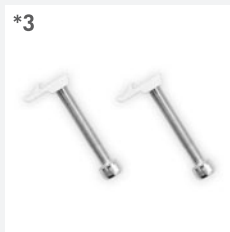
Installation



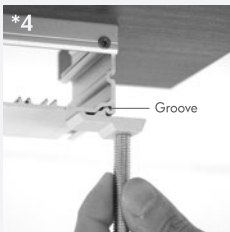
Insert a screwdriver through the opening on the bottom of the housing. Disengage the track from the housing by gently pushing onto the track with the screwdriver. Fully detach the track from the housing.



Align and slot the housing into the cutout hole on the wooden surface. Proceed to the next step for mounting brackets installation (optional) or step 7 for mounting with screws.



Prepare the mounting brackets as shown. Recommended table thickness of up to 55mm.



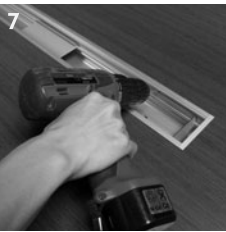
Align and hook the mounting bracket onto the groove at the bottom of the housing. Recommended number of mounting brackets is 4 pieces for every 1 metre.



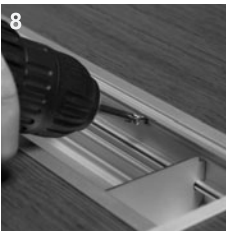
Using a size 5 allen key, secure the mounting brackets to the table.



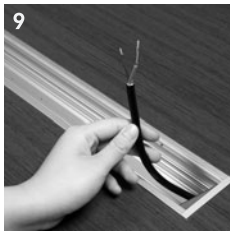
Housing is now secure. Proceed to step 9 to continue RH1 installation.



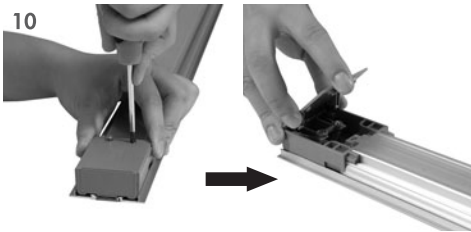
Locate the pre-drilled holes on the housing. Drill holes onto the wooden surface through the pre-drilled holes on the housing. (Drill bit Ø 2mm)



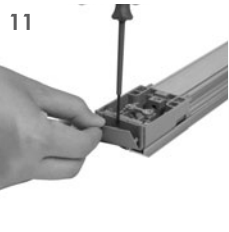
Insert self-tapping screws into the drilled holes. Tighten screws to secure housing onto the wooden surface.



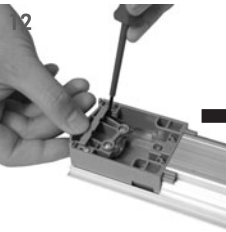
Route power cable through one end of the housing. Prepare to terminate the cable to the SFC2 track.



Loosen the screws on the safety cover and remove the safety cover.



Remove the dust cover from the end terminal.



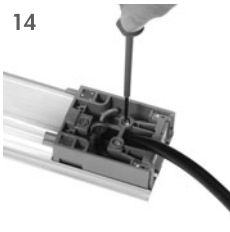
Using a screwdriver, detach the strain relief. Shift it outwards halfway as shown.



Slot the power cable through the strain relief and terminate the wires to the terminal. Refer to "Wiring Instructions" on the front face of this guide.



Fasten the core grip of the strain relief with a screwdriver.



Cut and remove the cable entry blank from the safety cover.



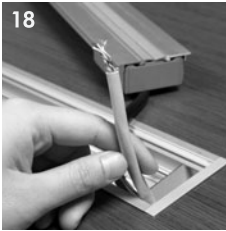
Attach and fasten the safety cover.



Attach the dust cover to the end terminal.



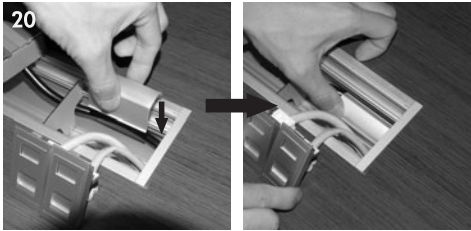
Route the data cable into the housing.



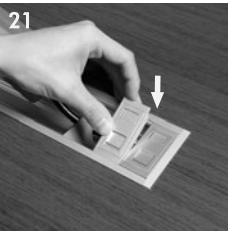
Terminate the data cable to the data jack and snap the data jack onto DS3. Repeat step 14 to 15 for installation of additional DS3.



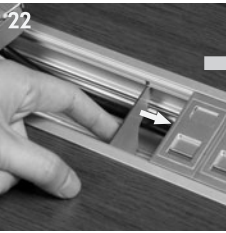
Place the separator over the power cable(s) and snap it into place. The separator segregates the power and data cables.



Snap DS3 onto the housing. Move the divider where necessary.



Move and align the divider towards the separator.



Snap the track onto the main housing.



Snap the track onto the main housing.



Snap the track onto the main housing.

* Securing Housing With Mounting Brackets (Optional Accessory)

3 Years Limited Warranty

1. Eubiq Pte Ltd ("Eubiq") warrants to the end-user of the product ("the Customer") that the product will be free from defects in materials and workmanship under normal use for a period of three (3) years from the date of retail purchase by the original end-user purchaser ("Warranty Period")
2. The Customer should access and refer to Eubiq's website at www.eubiq.com for a list of Eubiq authorised dealers to contact for warranty service.
3. All requests for warranty service must be made within the Warranty Period, and be accompanied by the original dated proof of purchase.