



VSF1-MC POWER AND DATA TRACK INSTALLATION GUIDE

Contents

INTRODUCTION	
Package Contents	1
Tools Required	1
Product Overview	1
Securing the Screw Capping	2
VSF1-MC Angle Configuration	2
 USING YOUR PRODUCT	
Please Read Before Use	3
Installation - 90° Configuration	4
Preparation of Data Outlets	5
 ALTERNATIVE CONFIGURATIONS	
Installation - 60° Configuration	6
Shifting of Data Outlets	10
Preparation of Data Outlets - Feed-Through Data Jack	11
 Technical Specifications and Warranty Statement	

Technical Specifications

Power Track	
Rated Voltage	: 125V a.c. Single-phase 250V a.c. Single-phase
Rated Current (Pre-wired cable)	: Total load shall not exceed individual country plug type 10Amp, 13Amp, 16amp - 1.5mm ² 3-core flexible cord 15Amp - 14AWG 3-core flexible cord 20Amp - 12AWG 3-core flexible cord
Frequency	: 50Hz/60Hz
Connection of Adaptor or Tap-off Unit	: Intended to be connected and disconnected when system is energised and with a load connected
Ambient Operating Temperature	: -5°C to +40°C (Not to exceed an average of more than 35°C in any 24 hours period)
Degree of Protection	: IP4X
Degree of Pollution	: 2 (Non-conductive pollution with temporary conductivity caused by condensation)

Material	
Track and Housing	: Aluminium
Insulation	: Polycarbonate

Size and Weight (Based on 1 metre length)	
Overall Dimension (Height x Depth x Width)	: 140.6mm x 91mm x 1000mm
Weight	: Estimated 3.5 kilograms

Data	
Compatible Keystone Cat5e Jacks	: AMP, Brandrex, 3M, Clipsal
Compatible Keystone Cat6 Jacks	: Brandrex, Clipsal, Alantek

* Product specifications are subject to change without prior notice.
* Pictures shown in this guide are for illustrative purposes only. Actual product outlook may differ.

3 Years Limited Warranty

1. Eubiq Pte Ltd ("Eubiq") warrants to the end-user of the product ("the Customer") that the product will be free from defects in materials and workmanship under normal use for a period of three (3) years from the date of retail purchase by the original end-user purchaser ("Warranty Period")
2. The Customer should access and refer to Eubiq's website at www.eubiq.com for a list of Eubiq authorised dealers to contact for warranty service.
3. All requests for warranty service must be made within the Warranty Period, and be accompanied by the original dated proof of purchase.

ALL RIGHTS RESERVED. EUBIQ AND GSS ARE THE REGISTERED TRADEMARKS OF EUBIQ PTE LTD.

INTRODUCTION

Package Contents

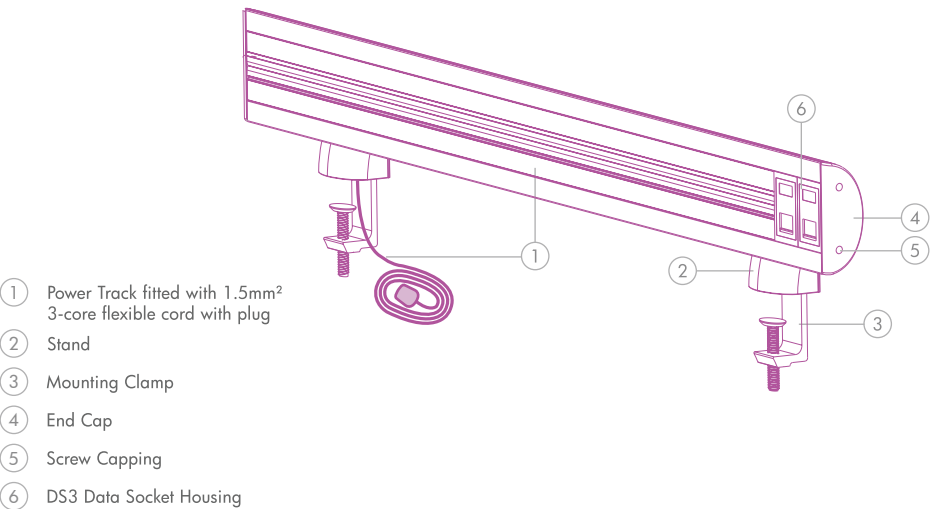
- ① 1 x VSF1-MC Track (Complete with 1.5mm² 3-core flexible cord with plug)
- ② M1.5 Allen Key (Included)
Ø: 1.5mm or 1/16in
- ③ M4 Allen Key (Included)
Ø: 4mm or 5/32in
- ④ 2 x Stands
- ⑤ 2 x Mounting Clamps
- ⑥ 6 x Screw Cappings
- ⑦ 1 x Installation Guide

* Actual contents may differ slightly depending on configuration.

Tools Required

- ① M1.5 Allen Key (Included)
Ø: 1.5mm or 1/16in
- ② M4 Allen Key (Included)
Ø: 4mm or 5/32in
- ③ Philips Screwdriver (Not Included)
- ④ Precision Screwdriver (Not Included)

Product Overview

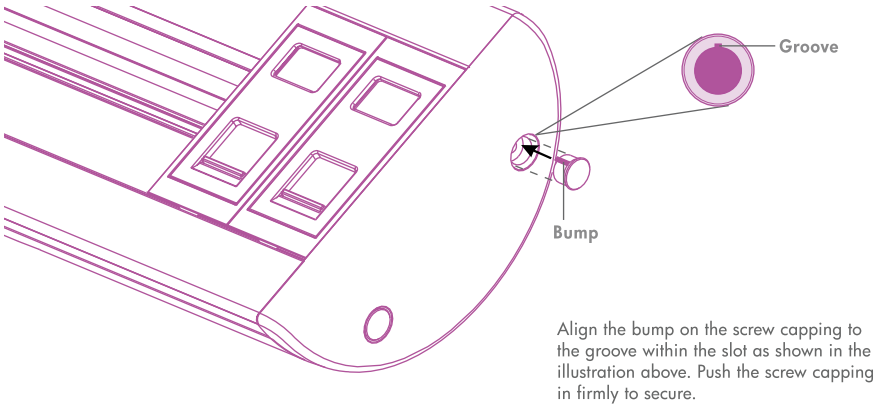


All VSF1-MC Tracks have 6 cable entry openings complete with cable entry trims, covers and blanks for ease of power and data configuration.



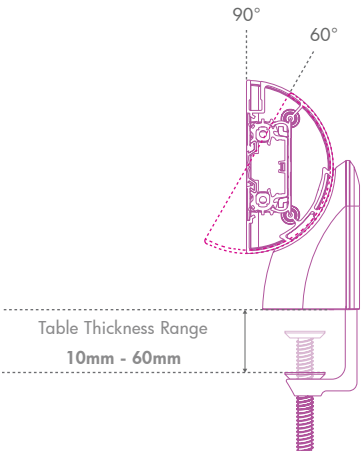
Securing the Screw Capping

All VSF1-MC Tracks are pre-assembled without securing the screw capping for ease of angle configuration and data outlet preparation.



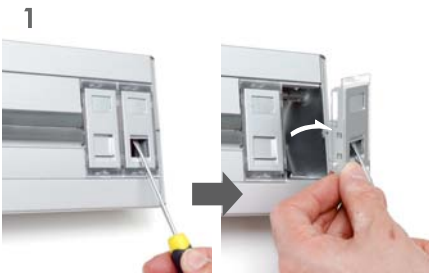
VSF1-MC Angle Configuration

All VSF1-MC Tracks are pre-assembled at 90°. For alternative configuration, refer to “Installation – 60° Configuration” of the **ALTERNATIVE CONFIGURATIONS** section.

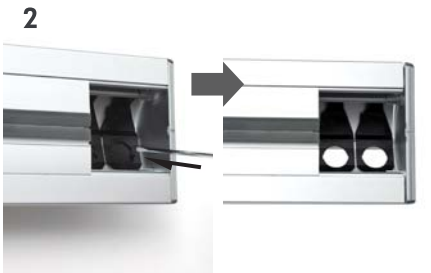


Preparation of Data Outlets - Feed-Through Data Jack

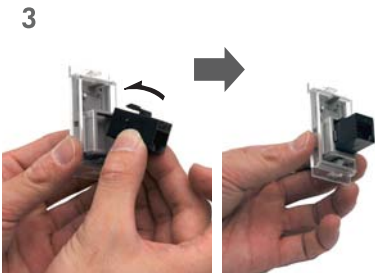
Follow the steps below to install the data outlets with feed-through data jacks.



Using a screwdriver, detach data socket housing from the main housing.



Using a screwdriver, push outwards to remove the cable entry blanks. Attach and secure the end caps and screw cappings.



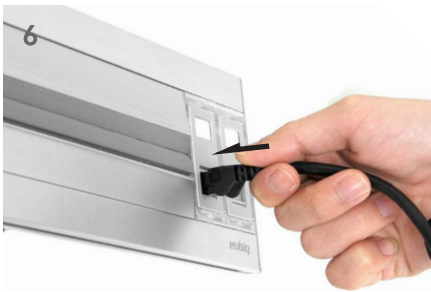
Snap the feed-through jack onto the data socket housing.



Snap the data socket housing onto the main housing.



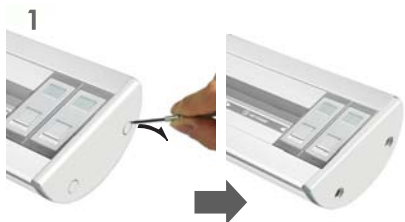
To connect your VSF1 to a network, insert incoming phone/data cable firmly into the rear of the feed-through data jack until it clicks. The opposite end of the cable should be connected to the network hub/switch/router.



To begin using the data outlets on your VSF1, insert one end of the phone/data cable firmly until it clicks. The opposite end of the cable should be connected to your telephone/modem device.

Shifting of Data Outlets

Follow the steps below to shift data outlets to the opposite end of the housing.



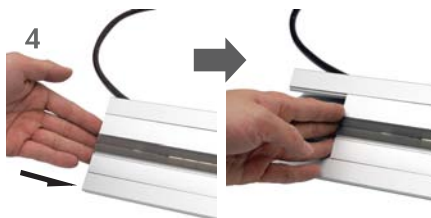
Using a precision screwdriver (not included), remove screw cappings on both sides if necessary.



Using a Philips screwdriver (not included), untighten the screws on both end caps and remove end caps.



Detach data socket housing from the main housing.



Push and flush the power track to the opposite end of the housing.



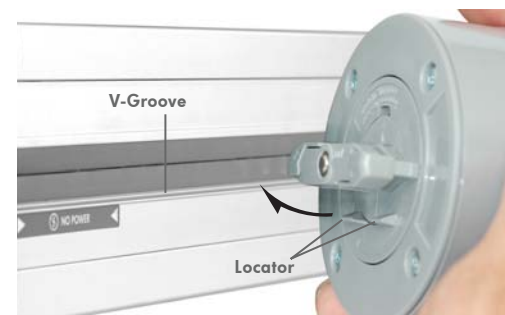
Using a screwdriver, push outwards to remove the cable entry blanks. Attach and secure the end caps.



To complete the installation of the data outlets, refer to step 2 to 6 of "Preparation of Data Outlets".

USING THE PRODUCT

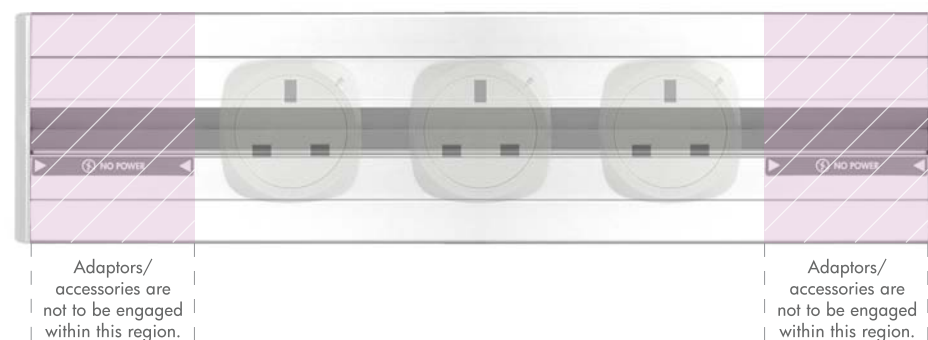
PLEASE READ BEFORE USE



- 1) Ensure V-Groove is at the bottom when installing or mounting
- 2) Always align Locator to V-Groove before inserting adaptors/accessories

CAUTION

- Keep away from fire
- Keep away from water
- Not for outdoor use
- To be installed by a qualified electrician/installer



Installation - 90° Configuration

Follow the steps below to start using VSF1-MC at 90° configuration

* To change to 60° configuration, refer to "Installation - 60° Configuration" of the **ALTERNATIVE CONFIGURATIONS** section.



To remove stand cap, push and slide upwards. Place VSF1-MC Track on the table and align the stand to the edge of the table as shown above.



Attach mounting clamp onto the stand as shown.



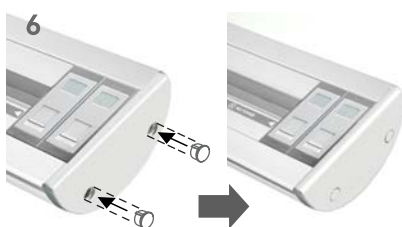
Using an M4 allen key provided (Ø: 4mm or 5/32in), tighten screw to secure mounting clamp to the table.
Repeat step 2 and 3 to secure the 2nd stand.



Slide stand cap onto the rear of the stand. Push down and snap cap into place.
Repeat this step to attach the 2nd stand cap.



For installation of data outlets, refer to 'Preparation of Data Outlets'.



Snap in the screw cappings (refer to "Securing the Screw Capping").
To power up, connect plug to the nearest power outlet and switch it on.

Installation - 60° Configuration (Cont'd)



Using the M4 allen key provided (Ø: 4mm or 5/32in), tighten screw to secure mounting clamp to the table.
Repeat step 18 and 19 to secure the 2nd stand.



Slide stand cap onto the rear of the stand. Push down and snap into place.
Repeat this step to attach the 2nd stand cap.



Before powering up, wire the flexible cord to the plug.
If in doubt, consult a qualified electrician/installer.
To power up, connect plug to the nearest power outlet and switch it on.

Installation - 60° Configuration (Cont'd)

13



For installation of data outlets, refer to 'Preparation of Data Outlets'.

14



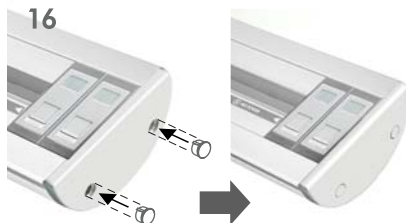
Snap on the data socket housings.

15



Attach both the end caps. Using a Philips screwdriver (not included), tighten the screws on the end caps.

16



Snap in the screw cappings (refer to "Securing the Screw Capping").

17



Place VSF1-MC Track on the table and align the stands to the edge of the table as shown above.

18

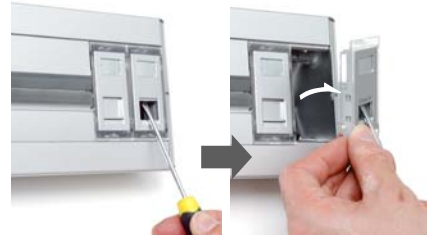


Attach mounting clamp onto the stand as shown.

Preparation of Data Outlets

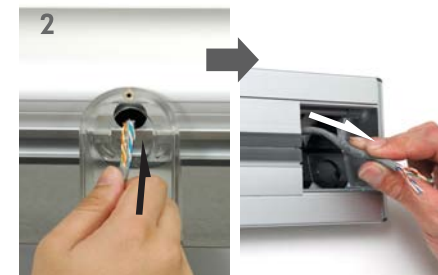
Follow the steps below to install the data outlets

1



Using a screwdriver, detach data socket housings from the main housing.

2



Insert data cable from the opening located on the rear of the stand through the opening on the main housing.

3



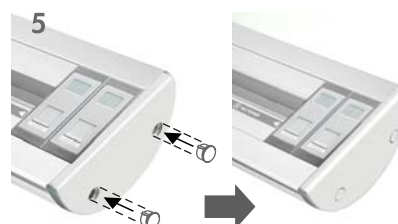
Terminate cable to keystone jack (refer to "Technical Specifications" for recommended jacks) and attach jack to data socket housing. If in doubt, consult a qualified electrician/installer.

4



Snap data socket housings onto the main housing. Repeat step 2 to 4 where necessary.

5



Snap in the screw cappings (refer to "Securing the Screw Capping"). The data outlets are now ready for use.

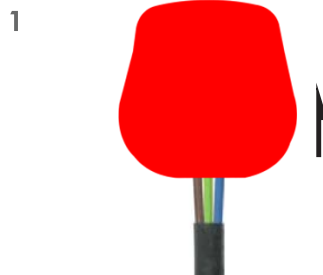
6



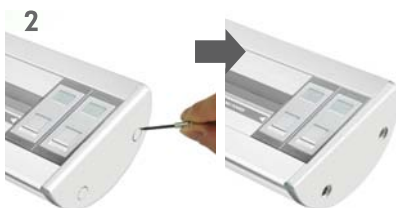
To begin using the data outlets, insert one end of the phone/data cable firmly until it clicks. The opposite end of the cable should be connected to your telephone/modem device.

Installation - 60° Configuration

Follow the steps below to install VSF1-MC at 60° configuration



Before proceeding, unwire the flexible cord from the plug. **If in doubt, consult a qualified electrician/installer.**



Remove the screw cappings on both of the end caps using a precision screwdriver (not included) if necessary.



Using a Philips screwdriver (not included), untighten the screws and remove both end caps.



Detach the data socket housings from the main housing.



To remove stand cap, push and slide the cap upwards. **Repeat this step to remove the 2nd stand cap.**



Gently lift up one end of the track to disengage from the backplate. Lift the track completely off the housing and gently pull out the flexible cord.

Installation - 60° Configuration (Cont'd)



Using the M1.5 allen key provided (Ø: 1.5mm or 1/6in), untighten the screw on the stand as shown.



Slide and remove the stand from the housing as shown above.

Repeat step 7 and 8 to remove the 2nd stand.



Align and slide the stand along the groove on the main housing for 60° configuration.



Align the openings on both the stand and the housing. Secure the stand with an M1.5 allen key provided (Ø: 1.5mm or 1/6in).

Repeat step 9 and 10 to secure the 2nd stand.



Insert the flexible cord from the opening located on the front of the main housing through the opening on the stand.



Align the track to the backplate and snap onto the main housing.