



# SC TRACK

## Installation Guide

### CAUTION

- Keep away from fire.
- Keep away from water.
- Not for outdoor use.
- To be installed by a qualified electrician/installer.

### PLEASE READ BEFORE INSTALLING

**INSTALLING PARTY**  
All Power Tracks must be installed by a qualified electrician.

**USE OF EARTH LEAKAGE CIRCUIT BREAKER (ELCB)**  
It is a mandatory requirement that all installations of electrical power source must be connected to an ELCB to provide protection against overload, short circuits and earth leakages faults. Failure to comply can be hazardous.

**INSTALLATION LOCATION**  
All Power Tracks must be installed at a location that complies with safety rules and regulations of respective country.

**INSTALLATION SURFACE**  
All Power Tracks must be installed on a flat surface.

**INSTALLATION CLEARANCE**  
SC Tracks should be installed with a minimum clearance of 18mm above and 40mm below (for 'twist-on' accessories/for easy installation) from any cabinets or home fixtures (see Fig.1).

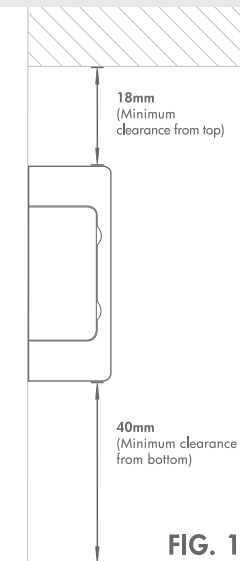
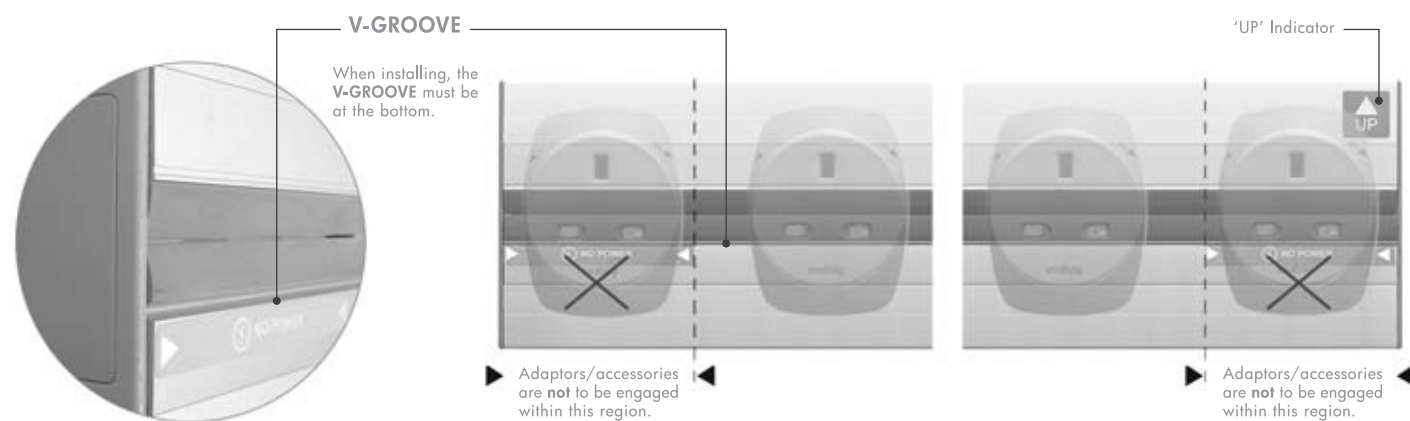


FIG. 1

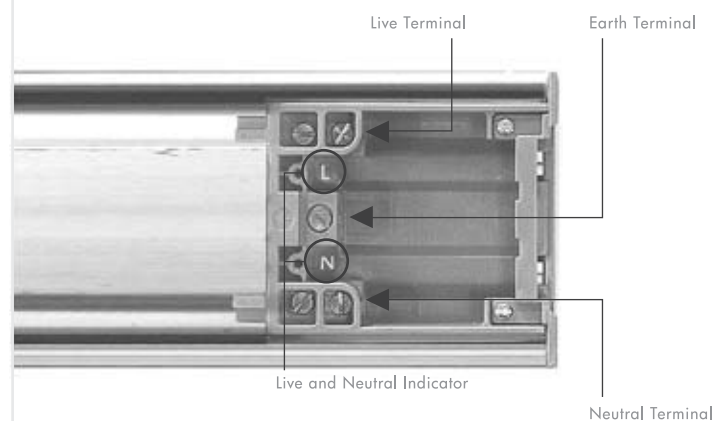
### Technical Specifications

Rated Voltage	: 250 V a.c. Single-phase
Rated Current	: 40 Amp maximum
Frequency	: 50Hz / 60Hz
Conditional Short Circuit Rating	: (MCB: In:40A Ue:400V), Type B (BS EN 60898-1) Prospective current: 6kA (BS EN 60439-2)
Rated Impulse Withstand Voltage	: 4000 V a.c.
Terminal Connecting Capacity (Live, Neutral and Earth)	: 4mm <sup>2</sup> to 10mm <sup>2</sup>
Ambient Operating Temperature	: -5°C to +40°C (not to exceed an average of more than 35°C in any 24 hours period)
Maximum Installation Altitude	: 2000 metres
Degree of Protection	: IP4X
Degree of Pollution	: 2 (Non-conductive pollution with temporary conductivity caused by condensation)
Track Material	: Aluminium
Insulation Material	: Polycarbonate

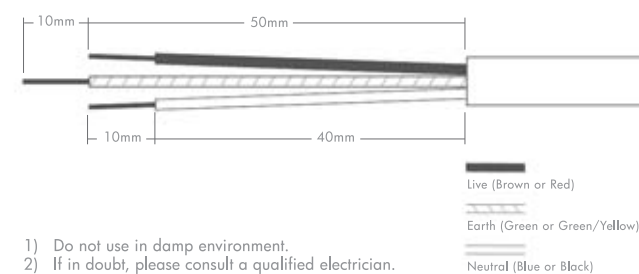
### Product Orientation



### Wiring Instructions

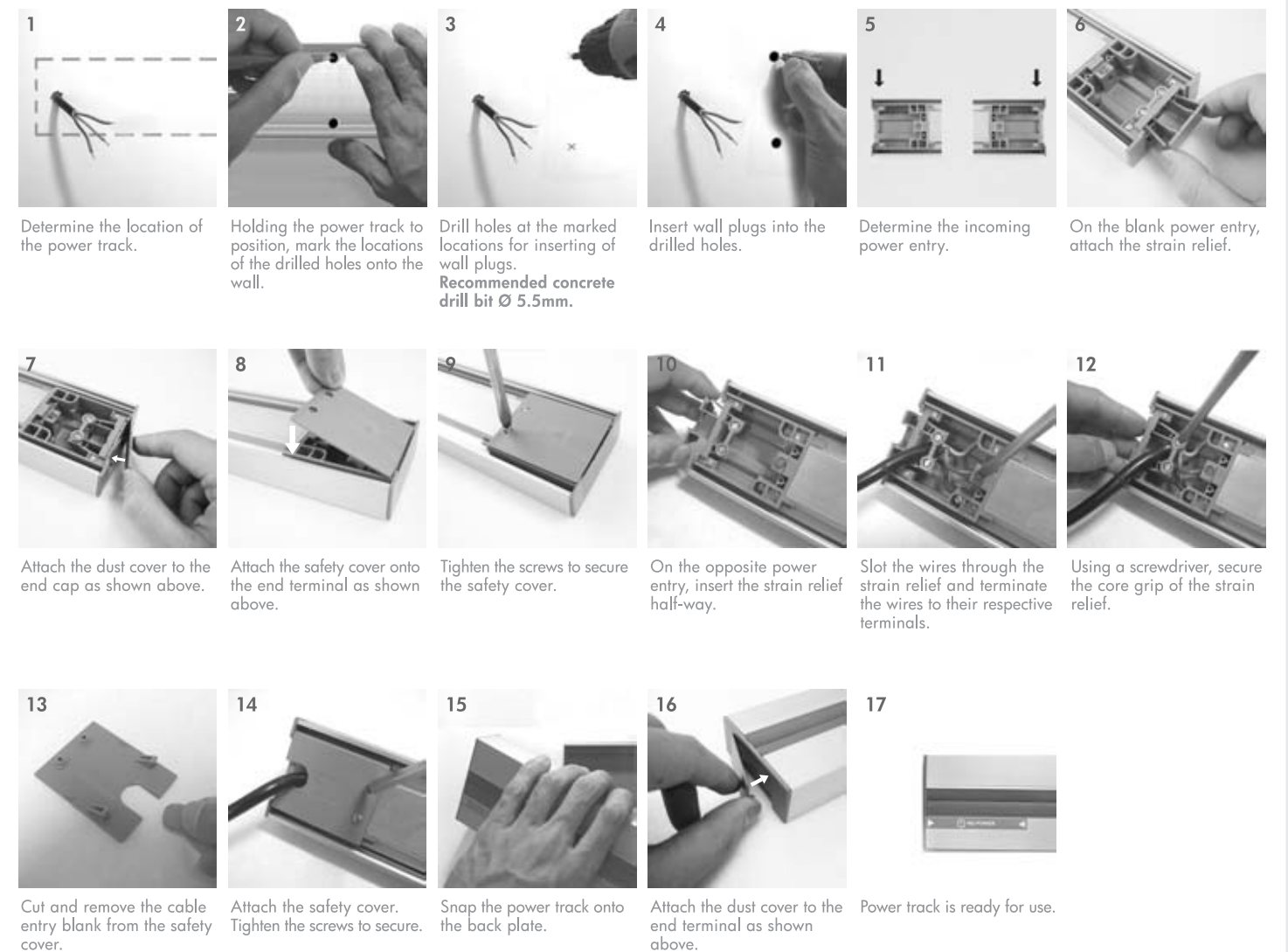


Prepare leads as shown:

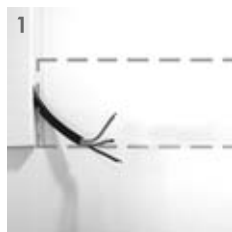


- 1) Do not use in damp environment.
- 2) If in doubt, please consult a qualified electrician.

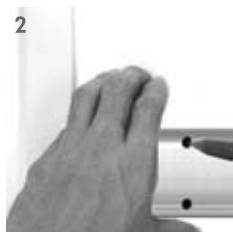
### Type A Installation - Direct Mounting



# Type B Installation - Wall Mounting with Cable Trunking



Determine the location of the power track.



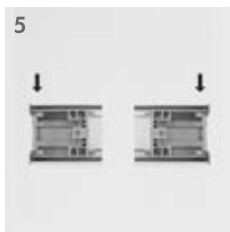
Holding the power track to position, mark the locations of the drilled holes onto the wall.



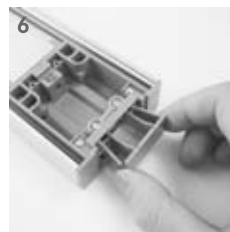
Drill holes at the marked locations for inserting of wall plugs.  
**Recommended concrete drill bit Ø 5.5mm.**



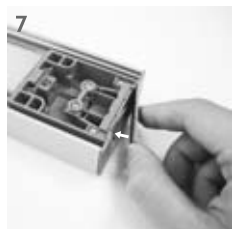
Insert wall plugs into the drilled holes.



Determine the incoming power entry.



On the blank power entry, attach the strain relief.



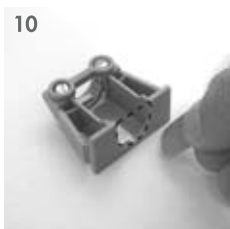
Attach the dust cover to the end cap as shown above.



Place safety cover onto the end terminal as shown above.



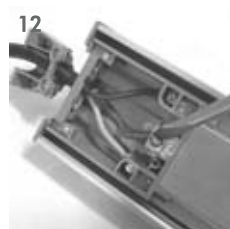
Tighten the screws to secure the safety cover.



Cut and remove the cable entry blank from the strain relief.



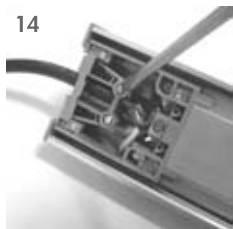
Slot the wires through the strain relief as shown above.



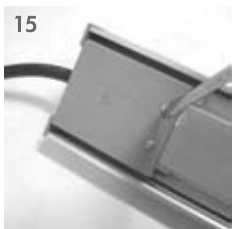
Terminate the wires to their respective terminals.



Attach the strain relief.



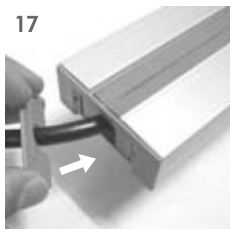
Using a screwdriver, secure the core grip of the strain relief.



Attach the safety cover. Tighten the screws to secure.



Cut and remove the cable entry blank from the dust cover.



Attach the dust cover to the end cap as shown above.



Snap the power track onto the back plate.



Power track is ready for use.

## 3 Years Limited Warranty

1. Eubiq Pte Ltd ("Eubiq") warrants to the end-user of the product ("the Customer") that the product will be free from defects in materials and workmanship under normal use for a period of three (3) years from the date of retail purchase by the original end-user purchaser ("Warranty Period")
2. The Customer should access and refer to Eubiq's website at [www.eubiq.com](http://www.eubiq.com) for a list of Eubiq authorised dealers to contact for warranty service.
3. All requests for warranty service must be made within the Warranty Period, and be accompanied by the original dated proof of purchase.